

# Diaphragm Pump 8011V AC

Flow	40.8 l/min
Max. vacuum	95%



## АНАЛИТИКА-СЕРВИС

### PNEUMATIC DATA

Description	8011V-35 AEE	
Part number	230 V/50 Hz	<b>80110500</b>
Max. flow	37.0 l/min	
Max. vacuum	95%	
Max. continuous vacuum	95%	
Max. restart vacuum	Ambient pressure	

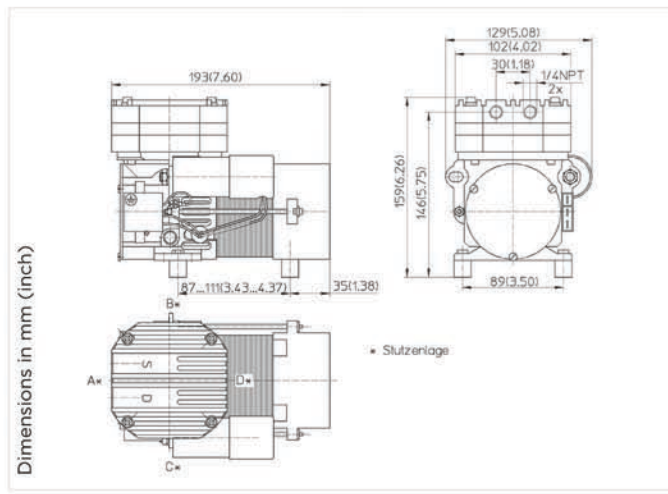
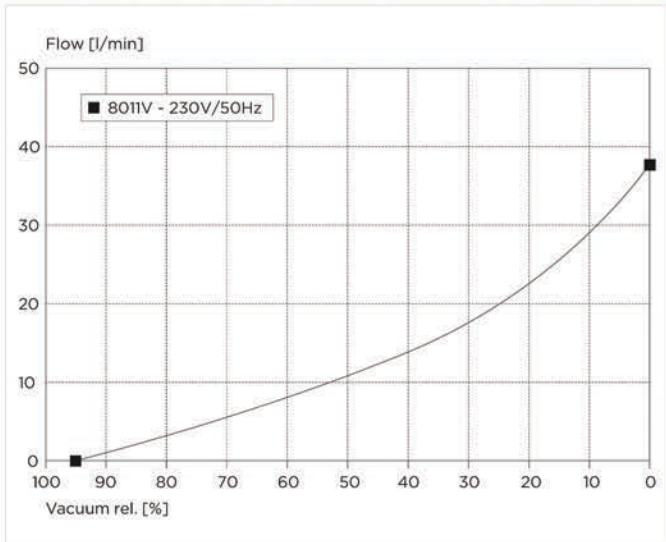
### ELECTRICAL DATA

Motor type	Capacitor
Nominal voltage	230 V/50 Hz
Nominal speed	1500 rpm
Current consumption	0.4 to 0.5 A
Starting current	1.0 to 1.15 A
Power consumption	85 to 115 W
Protection class	IP00
Motor insulation class	F
Thermal switch	140 °C

### GENERAL DATA

Ambient temperature	15 to 40 °C
Media temperature	10 to 60 °C
Weight	3.5 kg
Port direction	BC

### FLOW CURVES



### WETTED PARTS

Diaphragm	EPDM
Valves	EPDM
O-Ring	EPDM

### OPTIONS

-
FKM vapour resistant
-

### CHOICE OF MATERIALS

Chamber + Head

**8011...** Stock programme

### STANDARD

Aluminium

### OPTION

Aluminium hard coated

Model key:

